

Installation Steps for Java Runtime Environment – JRE (J2SE Runtime Environment 6.0 Update 2)

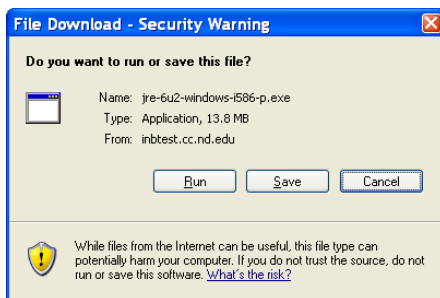
Windows Users Only

NOTE: You will need to use Internet Explorer 6.x/7.0 or Netscape 7.2 to complete this installation. Where the installation process differs between Internet Explorer and Netscape, specific instructions are given for each browser.

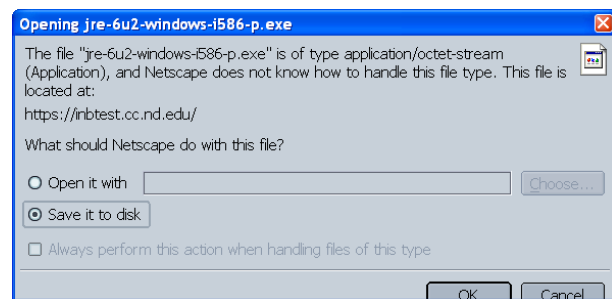
1. To begin the installation process, click on the link below or copy and paste the URL into your Web browser.

<https://inbtest.cc.nd.edu/jre-6u2-windows-i586-p.exe>

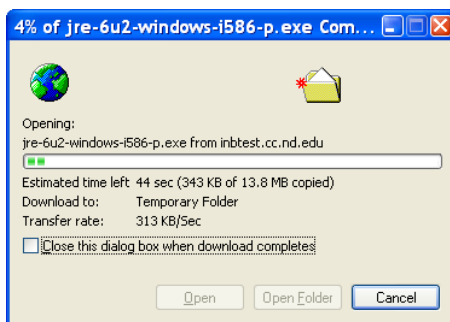
2. For **Internet Explorer Users**, when the File Download dialog box appears, click **Run**



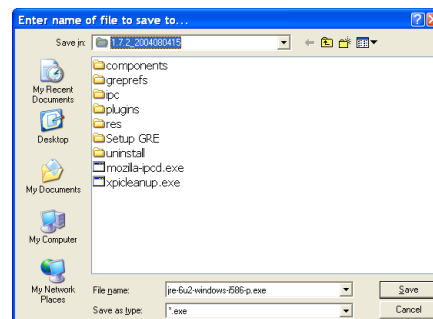
- For **Netscape Users**, click **OK** to save the file to disk.



3. For **Internet Explorer Users** the “Install” dialog box appears briefly.



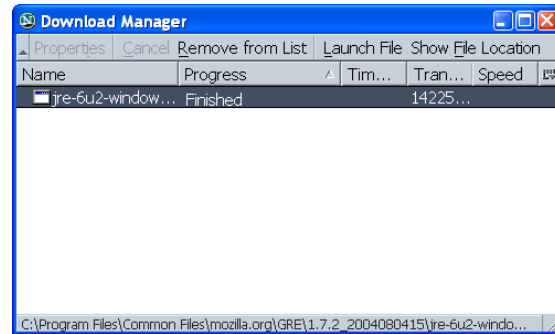
- For **Netscape Users**, the file will be downloaded by default to **C:\Program Files\Common Files\mozilla.org\GRE\1.7.2_2004080415**. You can save the file.



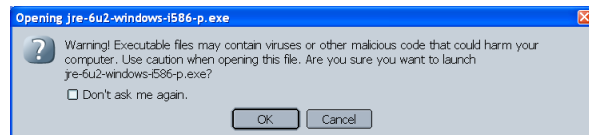
4. For **Internet Explorer Users**, in the Security Warning dialog box, click **Run**



For **Netscape Users**,
Once your download manger has downloaded the file, double click on the file name.



You will get a Security Warning dialog similar to the one show below. Click **Ok**.

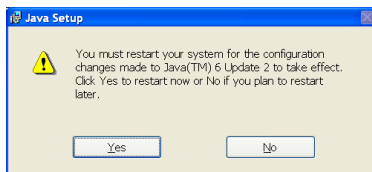


5. For both Internet Explorer and Netscape Navigator, the following instructions are similar.

The Java Setup console appears. Click **Accept** and wait for the installer to complete the installation.



6. Finally you may need to **restart your system**. Save all your changes and proceed to restart your system if you are prompted to restart.



If you have any problems or questions about this installation, please contact your departmental IT support contact(s) or the OIT help Desk at 631-8111.